

Neuro-Patch® & Lyoplant®

Dura substitution

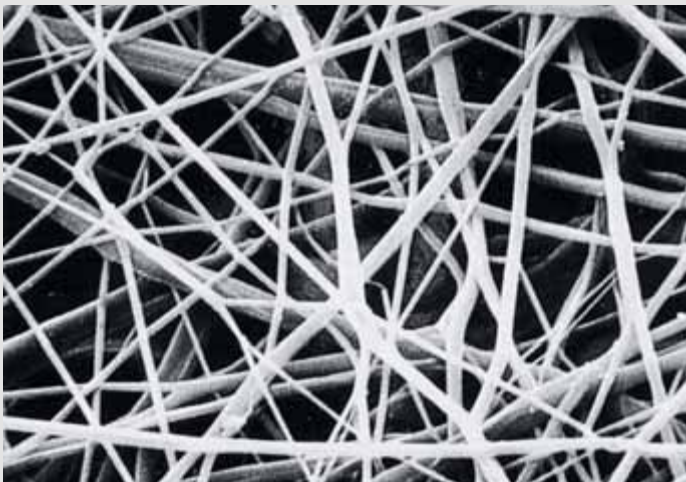


Aesculap Neurosurgery

Dura substitution

Neuro-Patch®

Synthetic dura substitution



functional, well-tolerated, non-absorbable

Neuro-Patch® is a type of fine fibred microporous fleece manufactured from a highly purified polyesterurethane.

An electronically controlled procedure has been developed for producing Neuro-Patch®, in which a dissolved polyesterurethane polymer is sprayed from specialised jets. This produces fibres which are captured at defined angles, producing a fleece-like structure.

The fine fibred microstructure supports the rapid infiltration of connective tissue cells.

Lyoplant®

Biological dura substitution



elastic, tearproof, absorbable

Lyoplant® is a pure collagen implant that is produced from bovine pericardium. This highly purified collagen is known for its low propensity to cause immunological reactions.

The special and comprehensive manufacturing process eliminates all non-collagenous substances such as fats, enzymes and other non-collagenous proteins.

Controlled lyophilisation (freeze drying) process ensures that the loose fibre structure of Lyoplant® is preserved to offer the optimum conditions for integration after implantation.

Sizes	Content	Cat. No.
12 x 14 cm	1 piece	106 4002
6 x 14 cm	1 piece	106 4010
8 x 9 cm	1 piece	106 4020
6 x 8 cm	1 piece	106 4029
5 x 6 cm	1 piece	106 4040
4 x 10 cm	1 piece	106 4037
4 x 5 cm	2 pieces	106 4045
2 x 10 cm	2 pieces	106 4053
1.5 x 3 cm	2 pieces	106 4061

NEW

NEW

Handling characteristics

- excellent elasticity and flexibility
- can be cut to any desired shape and size
- very easy to suture
- no suture pull-out

Product features

- fluid-tight to prevent CSF leakage
- microporous structure hence rapid host tissue population
- biocompatible
- high tensile strength

Sizes	Content	Cat. No.
6 x 14 cm	1 piece	106 6021
8 x 9 cm	1 piece	106 6030
6 x 8 cm	1 piece	106 6242
5 x 6 cm	1 piece	106 6050
4 x 10 cm	1 piece	106 6048
4 x 5 cm	2 pieces	106 6064
2 x 10 cm	2 pieces	106 6080
1.5 x 3 cm	2 pieces	106 6102

NEW

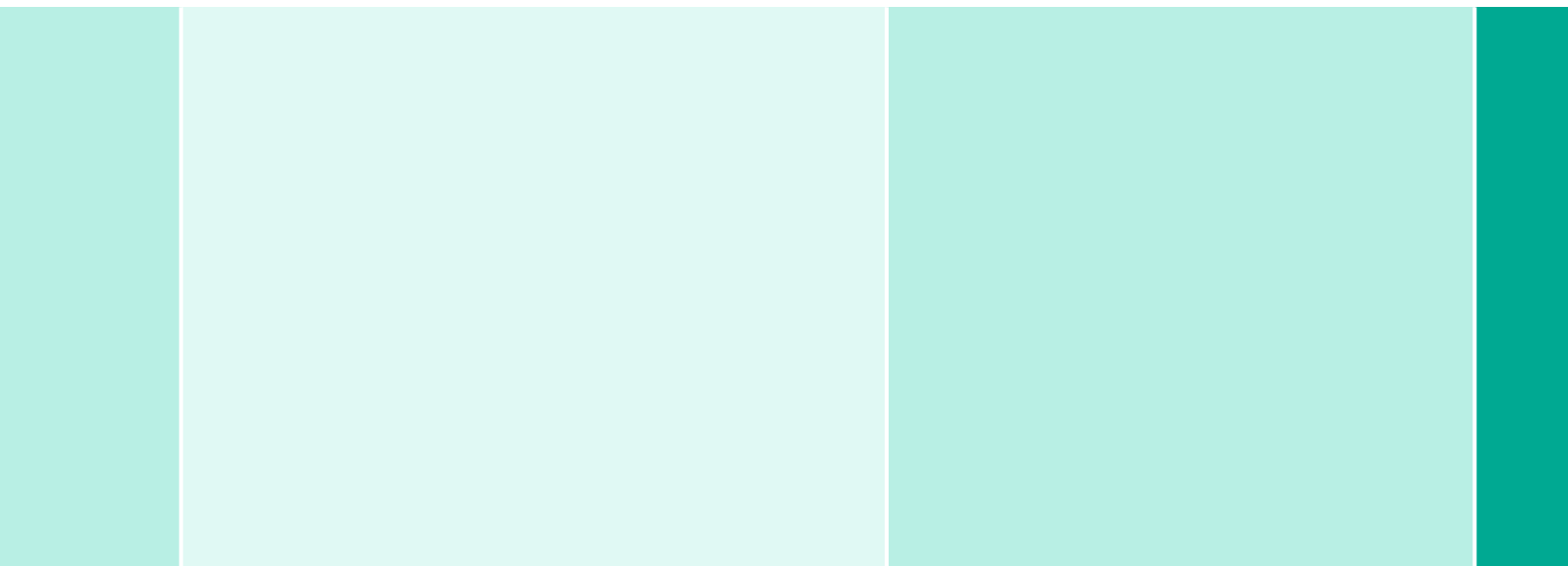
NEW

Mode of application

To achieve tension-free embedding, Neuro-Patch® and Lyoplant® should be cut as closely as possible to the defect size.

Neuro-Patch® and Lyoplant® should be fixed with non-absorbable suture material (polyester, polypropylene). Additionally, it may be secured with fibrin glue. Atraumatic round-bodied needles allow suturing without significant damage to the implant.

To improve smoothness and flexibility, the Lyoplant® material may be rehydrated prior to implantation.



Aesculap AG | Am Aesculap-Platz | 78532 Tuttlingen | Germany
Phone +49 (0) 74 61 95-0 | Fax +49 (0) 74 61 95-26 00 | www.aesculap.com

Aesculap – a B. Braun company

The main product trademark 'Aesculap' is a registered trademark of Aesculap AG. The product trademarks 'Neuro-Patch' and 'Lyoplant' are registered trademarks of B. Braun Melsungen AG.

Subject to technical changes. All rights reserved. This brochure may only be used for the exclusive purpose of obtaining information about our products. Reproduction in any form partial or otherwise is not permitted.

Brochure No. 23002

0213/0.5/3